

2009

20 April  
21 April  
22 April  
23 April  
24 April



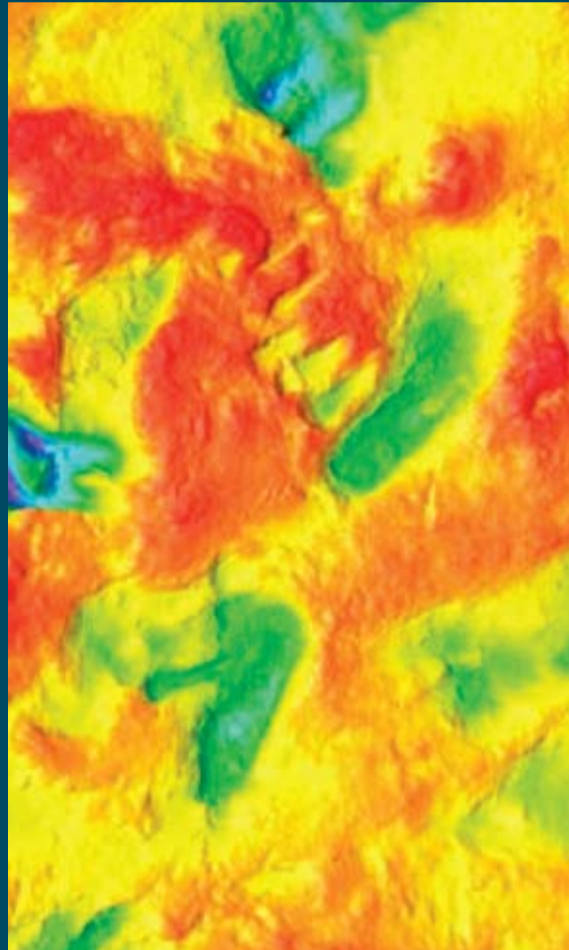
Dunedin: Hutton Theatre, Otago Museum, 5.30pm

Christchurch: Philip Carter Family Auditorium, Christchurch Art Gallery, 5.30pm

Wellington: Old Museum Block Lecture Theatre, Buckle Street, Massey University, Wellington, 5.30pm

Palmerston North: Japanese Lecture Theatre, University House, Massey University, 5.30pm

Auckland: Lecture Theatre B4, Owen Glenn Building, 12 Grafton Road, University of Auckland, 6.30pm



# In Darwin's Footsteps:

## Bipedalism, tools and foraging in the early stages of human evolution

Jack Harris is Professor of Anthropology, Rutgers University, New Jersey, USA, a Research Associate of the National Museum of Kenya and Coordinator of Kenyan Field Schools in Paleoanthropology, Wildlife Ecology and Conservation.

Darwin, in his writings discussed adaptations which were critical in human evolutionary history, including bipedalism, tool use, and diet breadth. New Zealand born John Harris discusses and explores the deep evolutionary links between hominin physical attributes such as bipedalism and hand morphology with behavior traits such as stone tool use, ranging patterns and diet. Dr. Harris draws on forty years of past and present fieldwork on the African Continent.

*"Man alone has become a biped: and we can, I think partly see how he has come to assume his erect attitude, which forms one of his most conspicuous characters. Man could not have attained his present dominant position in the world without his use of his hands." (Darwin 1871, 434)*

*"To chip a flint into the rudest tool or to form a barbed spear or hook from a bone, demands the use of a perfect hand" (Darwin 1871, 432)*

Refreshments will be served in the foyer area of each venue from half an hour before the lecture starts.

For more information, please see <http://www.allanwilsoncentre.ac.nz> or contact Susan Adams on [s.i.adams@massey.ac.nz](mailto:s.i.adams@massey.ac.nz)



ALLAN WILSON CENTRE  
2009 LECTURE SERIES

